

February 13, 2025



EAGLE EYE NEWS

REENROLL NOW

You have received an email with instructions last Friday. Your prompt attention is appreciated. We use these reenrollment numbers to budget and plan for next year including curriculum purchases and insuring adequate staffing.

Financial Aid Application Help

LESA is hosting a virtual scholarship application event for families wanting to ask questions or needing assistance with the LESA scholarship application.

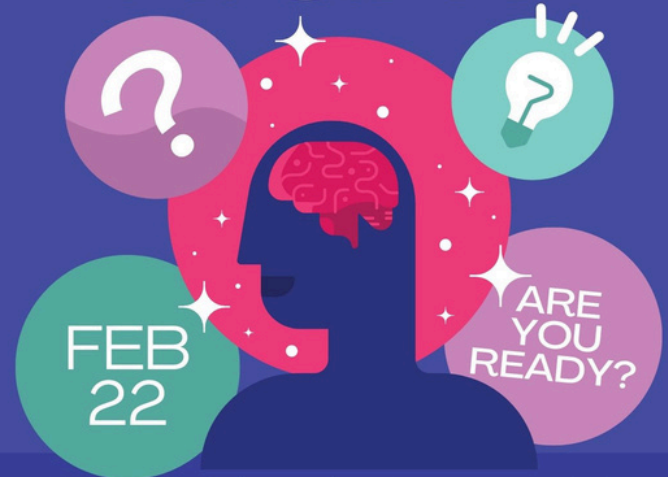
- Tuesday, February 25, 12:00pm – 6:00pm

Please use this link to sign up for a 30-minute time slot. Once signed up, you will be sent a Zoom link for the meeting.

<https://www.wejoinin.com/sheets/ujllu>

IMMANUEL OLIVETTE

TRIVIA NIGHT



Support the kids, teachers & programs at ILS!

\$25/person, table of 8
Includes soda, wine & beer
BYO snacks

7PM DOORS
OPEN AT 6

ILSOLIVETTE.ORG | [REGISTER HERE](#)

Volunteers Needed!!!

We will need some volunteers to make this event a success. This time can be applied to your required parent service hours. Please sign up using this [link](#).

Special Persons' day

Save the date: March 14, is a special event for grandparents and other special people in your child's life!

We will have the entire morning planned with activities!

There will be an 11:30am dismissal on this special day as well!

Black History Month

February is designated as Black History Month; this honors the triumphs and struggles of Black Americans throughout U.S. history. As we continue to focus on these Americans, be sure to ask your child what they have been discovering and learning!



ILS needs a **Director & Counselors** for our 2025 summer camp. If you or someone you know is interested, please complete this **APPLICATION**.

JOIN US!

Volunteers Needed!

Earn parent service hours!

Ties & Tiaras

Friday, March 28th, 2025 from 6-8pm

If interested:

Please contact Barb Amrich

B4amrich@charter.net

314-458-2024

NEEDED - Empty Milk Jugs!

The PK class is once again, getting ready for building their igloo. They can be gallon or half gallon jugs. We are asking that you please wash your empty jug out with water and soap, let air dry, and then bring to school. We do not need the lids. Thank you in advance for helping us make our igloo!



ILS CALENDAR - UPCOMING EVENTS

For additional sports schedules, check out the athletic calendar <https://www.ilsolivette.org/athletics>

- 2/13 2/3 Jr. Eagles Bball Practice, 3:45-4:45pm
B Boys Bball Game, Away, 5:00pm
 - 2/14 Valentines Parties
Early Dismissal, 11:30am
 - 2/15 2/3 Jr. Eagles Bball Game, 1:00pm
 - 2/16 Adult Basketball, 7:00pm, Gym
 - 2/17 **NO School** - Presidents' Day
 - 2/18 B Boys Bball Practice, 3:45-5:15pm
 - 2/19 Science Fair Boards Due, Fellowship Hall, 8:30am
Cheer Practice, 3:45-5:15pm
Chess Club, 3:45-5:15pm
B Boys Bball Game, Away, 4:30pm
 - 2/20 B Boys Bball Game, Home, 4:30pm
Cheer for game, 4:30pm
 - 2/21 2/3 Jr. Eagles Bball Practice, 3:45-5:15pm
 - 2/22 2/3 Jr. Eagles Bball Game, 12:00pm
ILS Trivia Auction, Gym, doors open @ 6pm
 - 2/23 Adult Basketball. 7:00pm, Gym
 - 2/24 B Boys Bball Practice, 3:45-5:15pm
Cheer Practice, 3:45-5:00pm
 - 2/25 Boys Volleyball Practice, 3:45-5:15pm
B Boys Bball Game, Away. 4:30pm
 - 2/26 Boys Volleyball Practice, 3:45-5:15pm
Cheer Practice, 3:45-5:15pm
 - 2/27 B Boys Bball Game, Home, 4:30pm
Cheer for Boys Game, 4:30pm
 - 2/28 2/3 Jr. Eagles Bball Practice, 3:45-4:45pm
- MARCH**
- 3/1 2/3 Jr. Eagles Bball Game, 1:00pm
 - 3/2 ILC Sausage Dinner, 11:00am
Adult Basketball, 7:00pm, Gym

ILS SOCIAL MEDIA

Please click on the links below to follow and like ILS on our Social Media platforms!



Facebook



Instagram

SAVE THE DATE for the 2nd Semester Dine Outs

March 6: Panera
4-8 pm



ILS **Responds** to God's Grace through Christ, **Assists** families and **Prepares** children spiritually, socially, and physically that they may serve Him.

Employment Opportunity

ILS is looking for Extended Care Aides.
3:30-5:30pm M/W/F.

If you or someone you know, is interested in this opportunity, please contact the school office, 314.993.5004 or Christine Nixon, cnixon@ilsolivette.org



K-8 Tuition Assistance

DEADLINE: April 10, 2025

Step 1: Complete application online through FACTS

- <https://online.factsmgt.com/grant-aid/inst/4FG82/landing-page>

Step 2: Submit payment for application (\$40)

Step 3: Submit **ALL 2024** tax documents by April 10

- Applicant & co-applicant must submit tax docs
- Taxes do not have to be filed, but must be prepared and uploaded to application

Step 4: CHECK EMAIL

- FACTS representatives will email if documentation is missing. Please respond as soon as possible and check your junk folder for FACTS emails.
- Tips on uploading a document can be found at www.lesastl.org

Required Documentation

- 2024—1040 Tax Form (page 1 & 2)
- 2024 W2
- Business Income docs
 - ⇒ Schedule 1—5, C, E, K, etc.
- Non-taxable docs
 - ⇒ Child support, SNAP, TANF, Social Security

Do You Qualify?

1. If at least **10% of income from 2024** is used to cover the cost of a child/ children's Lutheran K-8 **net tuition**
2. Child/children must be enrolled at the school by April 30 to be eligible for a scholarship during the May awards

Questions???

FACTS Parent Line: 1.866.315.9262

LESA Office: 314.200.0790

Email: mgersman@lesastl.org

Website: lesastl.org

MOScholars
Missouri's K-12 Scholarship Program
**MISSOURI DISTRICT
MO SCHOLARS**
K-12 Scholarship Program

MOScholars: Missouri's K-12 Scholarship Program

The Missouri District has been approved as an Educational Assistance Organization under the State of Missouri – Empowerment Scholarship Accounts Tax Credit Program. Under this program, taxpayers will be able to direct qualified dollars to the scholarship program and receive tax credits for their participation.

Interested in learning more? View our webinar “How Your State Tax Dollars Can Send a Child to a Lutheran School” on YouTube: [Missouri District Webinar: MOScholars \(youtube.com\)](https://www.youtube.com/watch?v=Missouri District Webinar: MOScholars)

Click [here](#) to visit the MOScholars page on the District website.

SCRIP Cards + Dine Out = Winning Combination!

We have Scrip gift cards available for the upcoming **Dine Out @ Panera!** Decent rebates too. Panera are 8% **So ILS benefits twice!!**

ILS Responds to God's Grace through Christ, Assists families and Prepares children spiritually, socially, and physically that they may serve Him.