



January 23, 2025

# EAGLE EYE NEWS

## BEANS & BAGS

You still have time to join the fun, this Saturday! Register your team for Cornhole and judge some chilis.

Chili



Cornhole

## Employment Opportunity

ILS is looking for Extended Care Aides.  
3:30-5:30pm M/W/F.

If you or someone you know, is interested in this opportunity, please contact the school office, 314.993.5004 or Christine Nixon, cnixon@ilsolivette.org

## Super Subs!!!

It's time to order Super Subs from the Immanuel Youth Group!  
Fresh bread, meats, cheeses, and that once-a-year treat...

Mama Luther's Secret Sauce!

Pick up at Immanuel on Sat., Feb. 8, 11am, or Super Bowl Sunday, Feb. 9 between services.

Orders due Feb. 4. \$15/sub



## ILS CALENDAR - UPCOMING EVENTS

For additional sports schedules, check out the athletic calendar <https://www.ilsolivette.org/athletics>

### JANUARY

- 1/23 Cheer Practice, 3:45-5:15pm  
A Girls Bball Game, Home, 4:30pm  
A Boys Bball Game, Home, 5:30pm  
Cheer: Boys Bball Game, 5:30pm
- 1/24 Pizza Day  
2/3 Jr. Eagles Bball Practice, 3:35-4:45pm
- 1/25 2/3 Jr. Eagles Bball Team Pictures, 12:00pm  
2/3 Jr. Eagles Bball Game, 1:00pm  
Beans & Bags Fundraiser Event, 5:00pm
- 1/26 A Girls Basketball Practice, 3:00pm  
A Boys Bball Practice, 5:00pm  
Adult Bball, 7:00pm, Gym
- 1/27 A Girls Bball @ SLALL City Playoffs  
A Boys Bball @ SLALL City Playoffs  
B Boys Bball Practice, 3:45-5:15pm
- 1/28 **Open House, 4-6pm**  
A Boys Bball @ SLALL City Playoffs  
A Girls Bball Game, Away, 4:30pm
- 1/29 A Girls Bball Practice, 3:45-5:15pm  
A Boys Bball Practice, 4:30-6:00pm
- 1/30 Winter Assembly, 2:15pm, Gym  
JPS/PS International Night, 5:30pm
- 1/31 Spelling LSAM State Scholar Bowl Meet  
2/3 Jr. Eagles Bball Practice, 3:35-4:45pm

### FEBRUARY

- 2/1 2/3 Jr. Eagles Bball Game, 1:00pm  
A Boys Bball Practice, 3:00-5:00pm
- 2/3 Adult Basketball, 7pm
- 2/3 Spelling Bee, 7th & 8th grades, 9:30am  
Dine Out @ Higher Groundz, 3-6pm
- 2/4 Spelling Bee, 5th & 6th grades, 9:30am  
Super Subs Orders Due
- 2/6 Spelling Bee, 4th & 3rd grades, 9:30am
- 2/7 Spelling Bee, 1st & 2nd grades, 9:30am
- 2/8 Pick up Super Subs, 11am-1pm, Gym
- 2/9 Adult Basketball, 7:00pm, Gym

## ILS SOCIAL MEDIA

Please click on the links below to follow and like ILS on our Social Media platforms!



Facebook



Instagram

## Dine Out Update

Thank you to everyone who attended the Freddy's Dine Out on Wednesday! Our next dine out is coming up quick on Monday, February 3, at **Higher Groundz** from 3-6 pm. Enjoy a delicious coffee, tea, or smoothie. Immanuel receives 50% of all drink sales when you bring your flyer! (this will be sent home next week)

### SCRIP Cards + Dine Outs = Winning Combination!

We have Scrip gift cards available for all of the upcoming **Dine Outs** (Higher Groundz and Panera)? Decent rebates too. Panera are 8% and Higher Groundz is 10% for \$10's and 16% for \$25's.

**So ILS benefits twice!!**



ILS needs a **Director & Counselors** for our 2025 summer camp. If you or someone you know is interested, please complete this [APPLICATION](#).

## JOIN US!

### SAVE THE DATE for the 2nd Semester Dine Outs

**February 3:**  
**Higher Groundz**  
3-6 pm

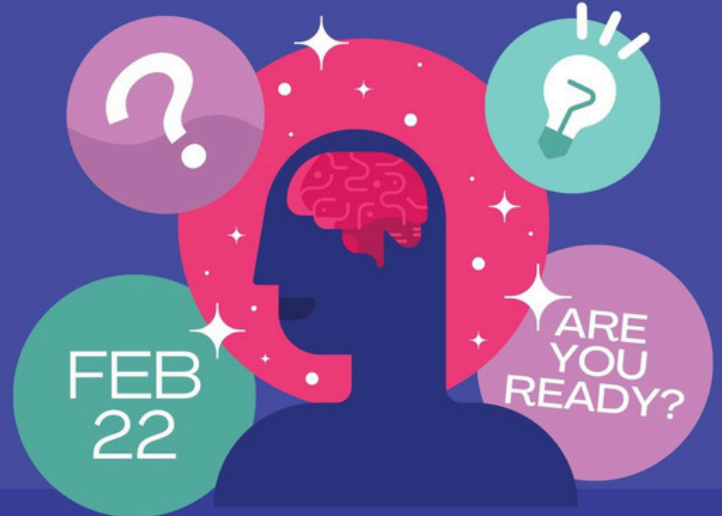


**March 6: Panera**  
4-8 pm



— IMMANUEL OLIVETTE —

# TRIVIA NIGHT



Support the kids, teachers & programs at ILS!

\$25/person, table of 8  
Includes soda, wine & beer  
BYO snacks

**7PM** DOORS  
OPEN AT 6

[ILSOLIVETTE.ORG](http://ILSOLIVETTE.ORG) | [REGISTER HERE](#)

### CHAPEL OFFERINGS UPDATE

**The 2nd Semester Offerings** of Immanuel Lutheran School will support the Lutheran Church Missouri Synod - Disaster Response - California Wildfires Fund. The Lutheran Church - Missouri Synod's Disaster Response ministry responds to immediate and long-term needs following natural and man-made disasters. Please help by sending in a weekly chapel offering and help our fellow brothers and sisters in Christ. We can also support those affected by remembering to include them in our prayers. "We love because He first loved us" (1 John 4:19) Helping the hurting amid disaster.

**First Semester totals** for our chapel offerings, which supported the Comfort Dogs Ministry of the Lutheran Charities Foundation totaled **\$788.54**. Your support stands as a reminder of God's unending love and His promise to be near the brokenhearted. Thank you for supporting this ministry over the last semester. "He heals the broken-hearted and binds up their wounds." Psalm 147:3

ILS Responds to God's Grace through Christ, **Assists** families and **Prepares** children spiritually, socially, and physically that they may serve Him.

# NEEDED - Empty Milk Jugs!

The PK class is once again, getting ready for building their igloo. They can be gallon or half gallon jugs. We are asking that you please wash your empty jug out with water and soap, let air dry, and then bring to school. We do not need the lids. Thank you in advance for helping us make our igloo!



## K-8 Tuition Assistance

**Step 1:** Complete application online through FACTS

- <https://online.factsmgt.com/grant-aid/inst/4FG82/landing-page>

**Step 2:** Submit payment for application (\$40)

**Step 3:** Submit **ALL 2024** tax documents by April 10

- Applicant & co-applicant must submit tax docs
- Taxes do not have to be filed, but must be prepared and uploaded to application

**Step 4: CHECK EMAIL**

- FACTS representatives will email if documentation is missing. Please respond as soon as possible and **check your junk folder** for FACTS emails.
- Tips on uploading a document can be found at [www.lesastl.org](http://www.lesastl.org)

### Required Documentation

- 2024—1040 Tax Form (page 1 & 2)
- 2024 W2
- Business Income docs
  - ⇒ Schedule 1—5, C, E, K, etc.
- Non-taxable docs
  - ⇒ Child support, SNAP, TANF, Social Security

## DEADLINE: April 10, 2025

### Do You Qualify?

1. If at least **10%** of income from 2024 is used to cover the cost of a child/children's Lutheran K-8 **net tuition**
2. Child/children must be enrolled at the school by April 30 to be eligible for a scholarship during the May awards

### Questions???

FACTS Parent Line: 1.866.315.9262

LESA Office: 314.200.0790

Email: [mgersman@lesastl.org](mailto:mgersman@lesastl.org)

Website: [lesastl.org](http://lesastl.org)



### MOScholars: Missouri's K-12 Scholarship Program

The Missouri District has been approved as an Educational Assistance Organization under the State of Missouri - Empowerment Scholarship Accounts Tax Credit Program. Under this program, taxpayers will be able to direct qualified dollars to the scholarship program and receive tax credits for their participation.

Interested in learning more? View our webinar "How Your State Tax Dollars Can Send a Child to a Lutheran School" on YouTube: [Missouri District Webinar: MOScholars \(youtube.com\)](https://www.youtube.com/watch?v=Missouri District Webinar: MOScholars)

Click [here](#) to visit the MOScholars page on the District website.

## COLD WEATHER

With the current cold & snowy weather, we remind everyone that their children should be dressed appropriately to participate in outdoor recess.

If they wish to play in the snow they must also have the appropriate snow clothes so they will have dry clothes when they return to the classroom.